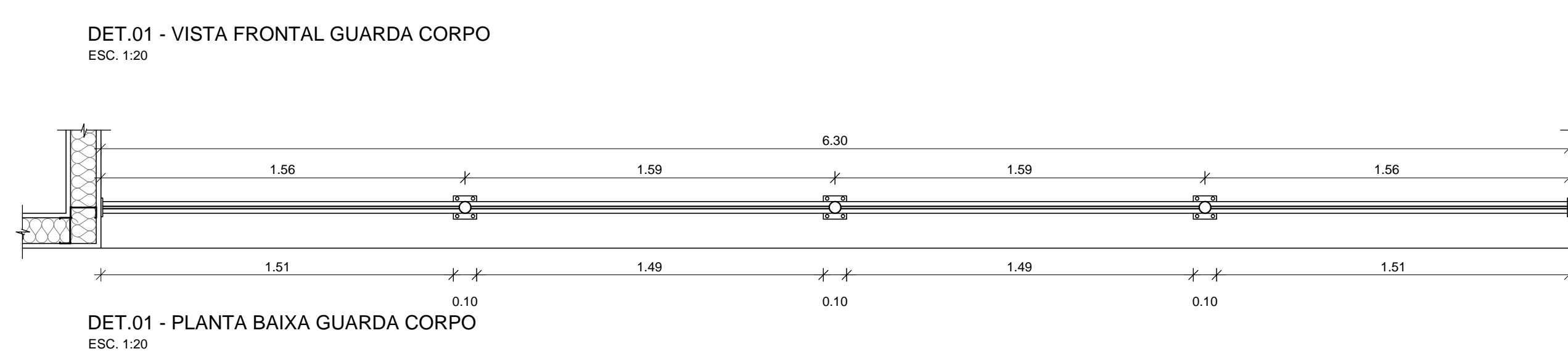
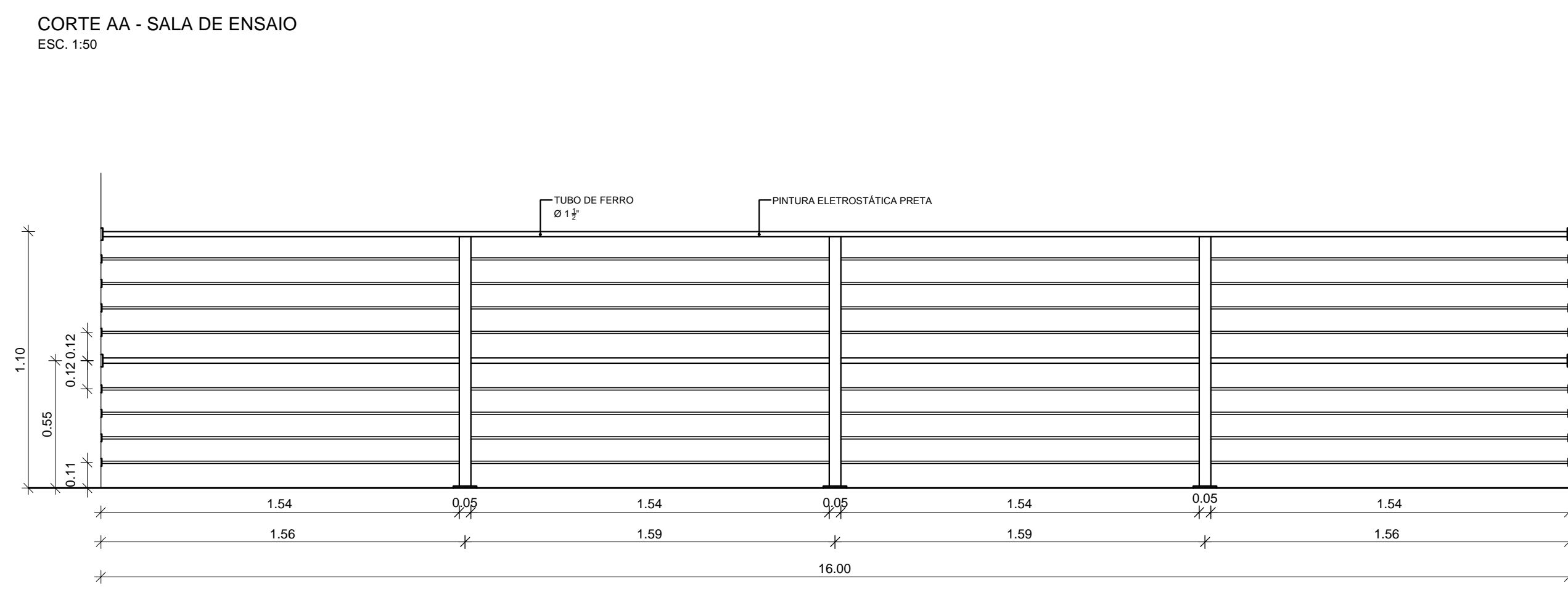
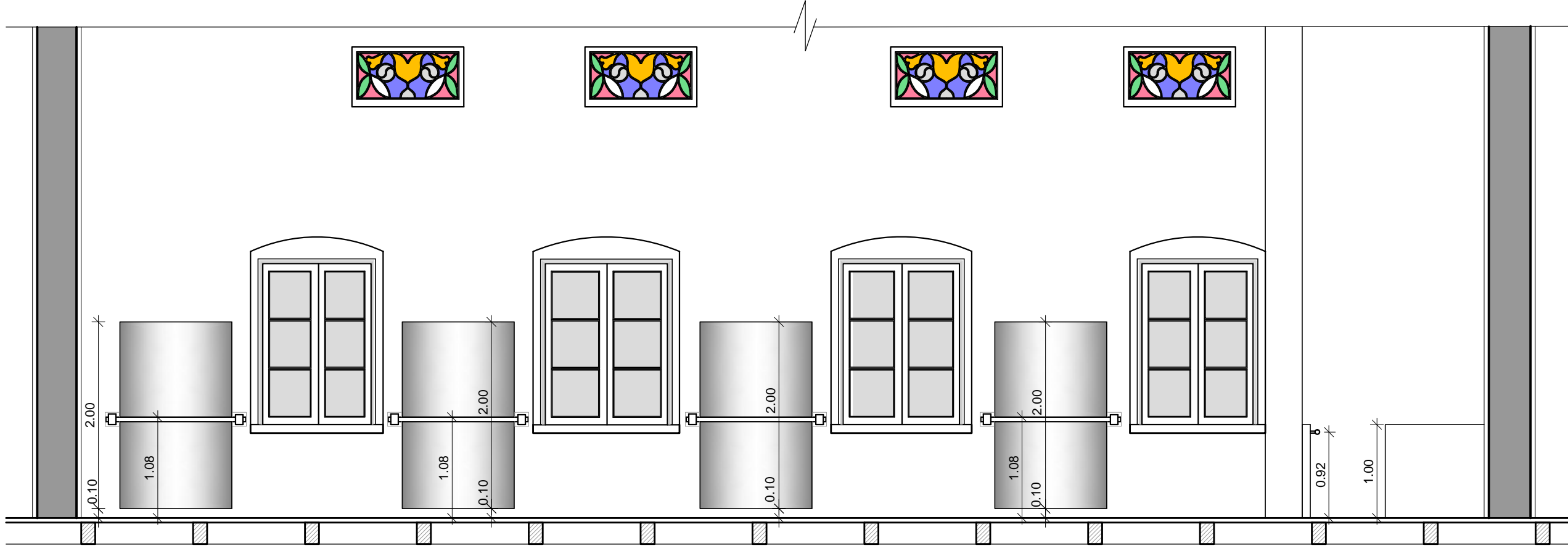
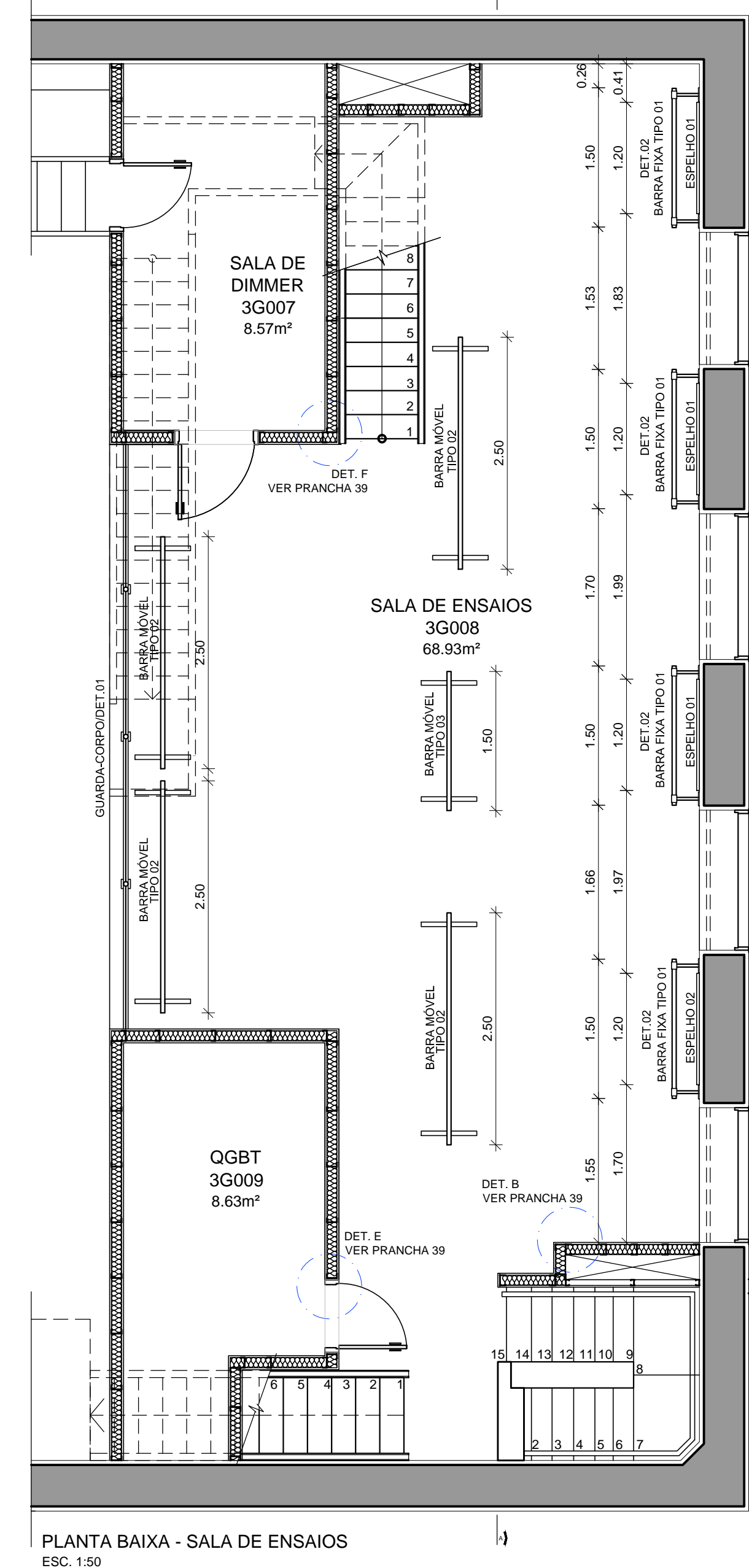
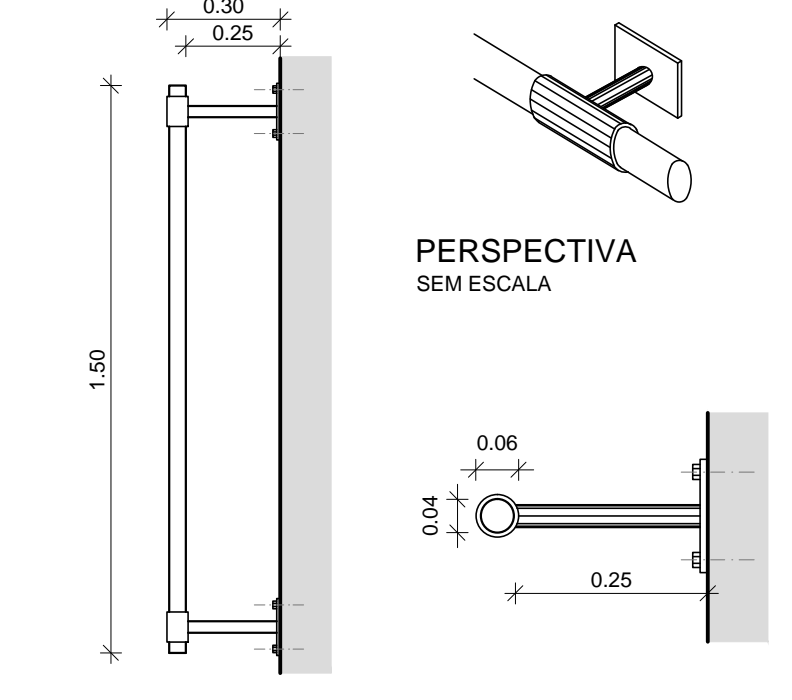


SALA DE ENSAIOS  
BARRAS FIXAS E MÓVEIS | ESPELHO | GUARDA-CORPO



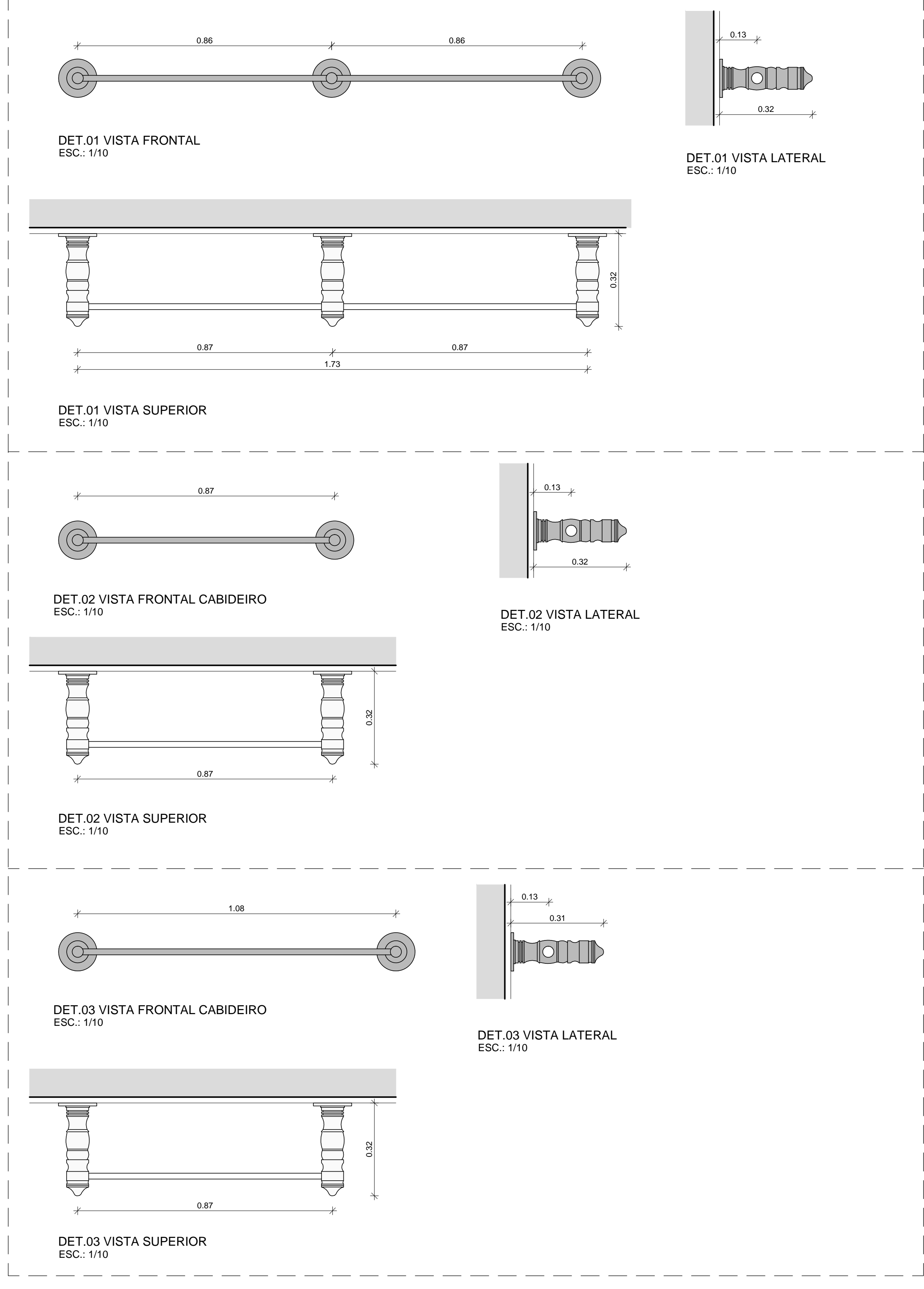
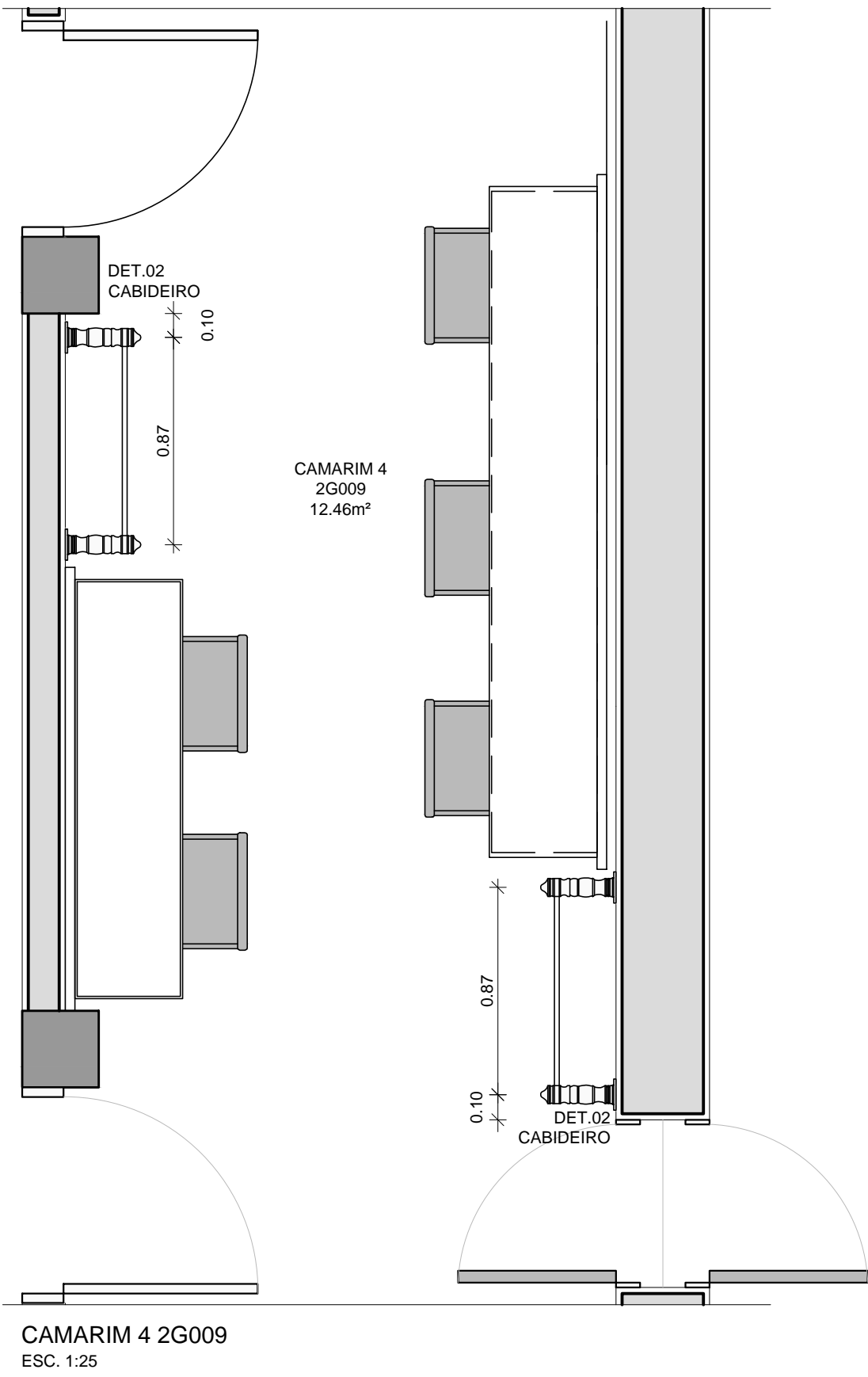
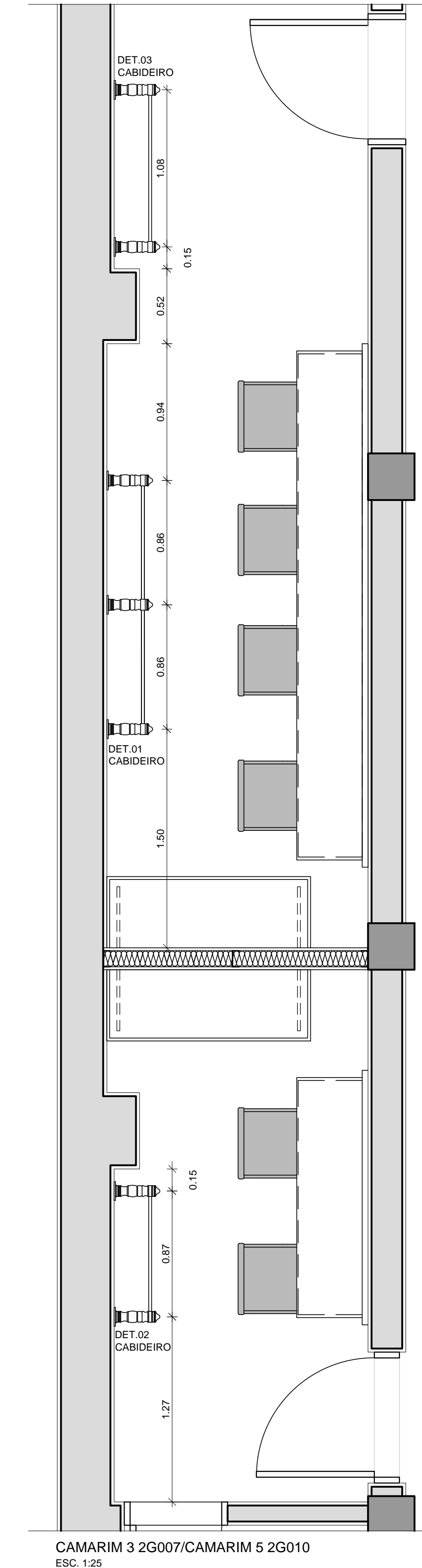
ITEM	DIMENSÕES	QUANTIDADE
BARRA FIXA - TIPO 01	150x30x10cm	3 UNIDADES
BARRA MÓVEL - TIPO 02	250x30x10cm	4 UNIDADES
BARRA MÓVEL - TIPO 03	150x30x10cm	1 UNIDADE
ESPELHO TIPO 01	150x200	4 UNIDADES



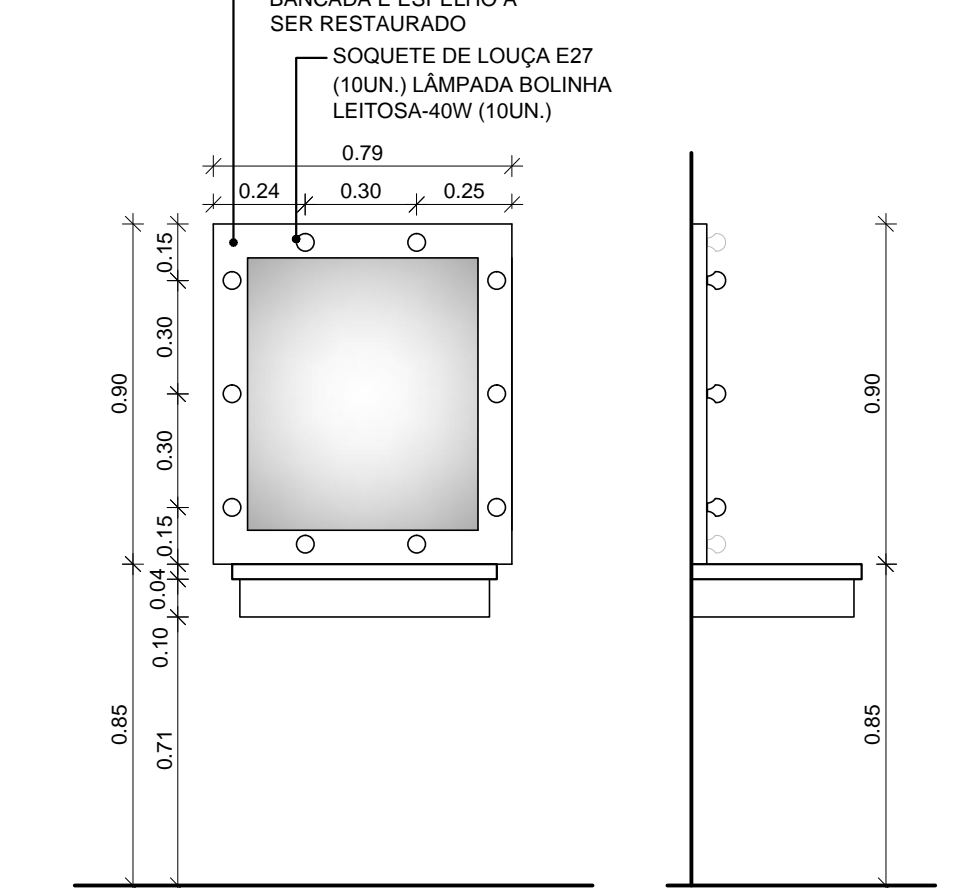
DET.02 BARRA FIXA PLANTA BAIXA ESC. 1:50

DET.02 BARRA FIXA CORTE ESC. 1:10

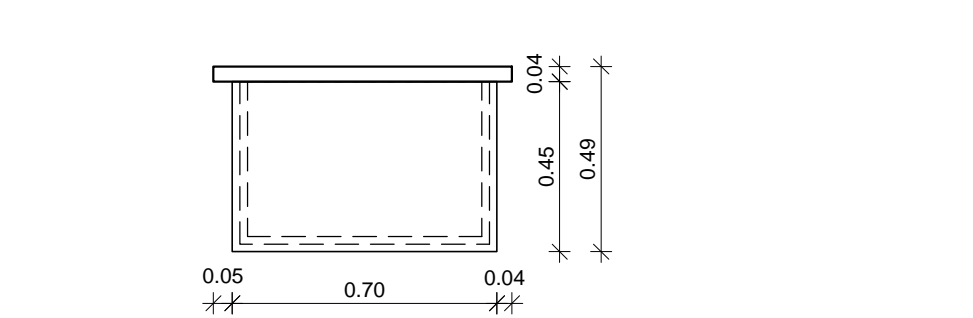
CAMARINS  
CABIDEIROS



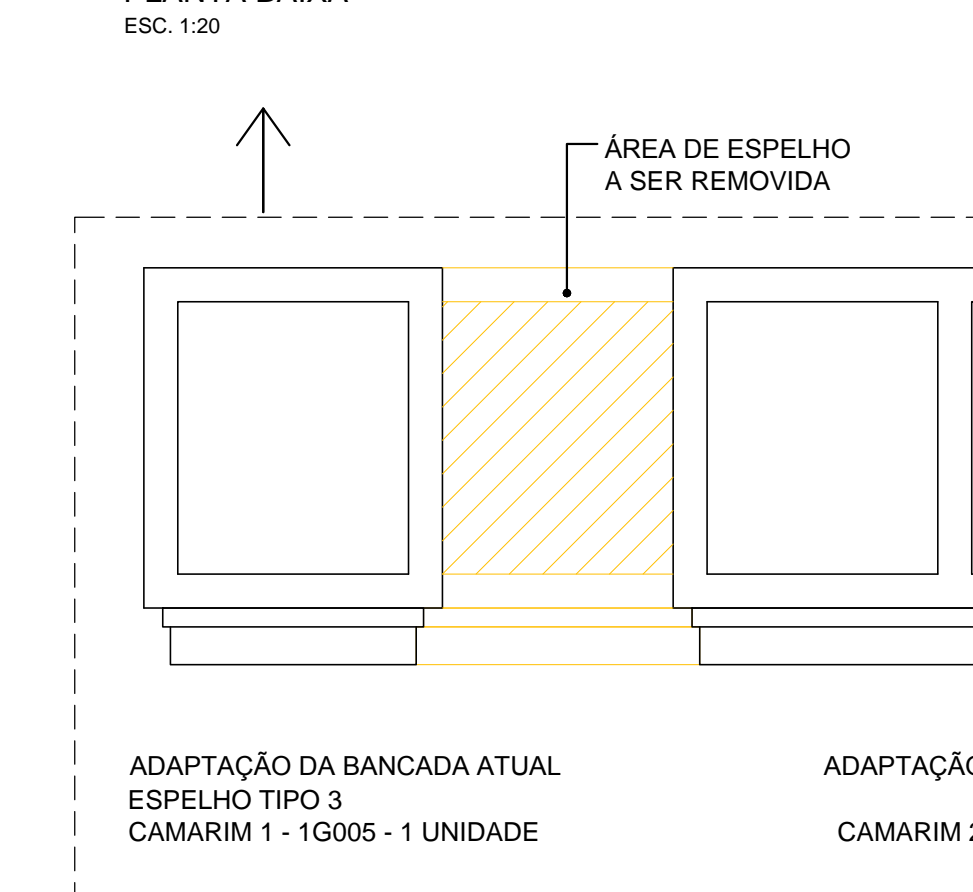
CAMARINS  
BANCADAS E ESPELHOS



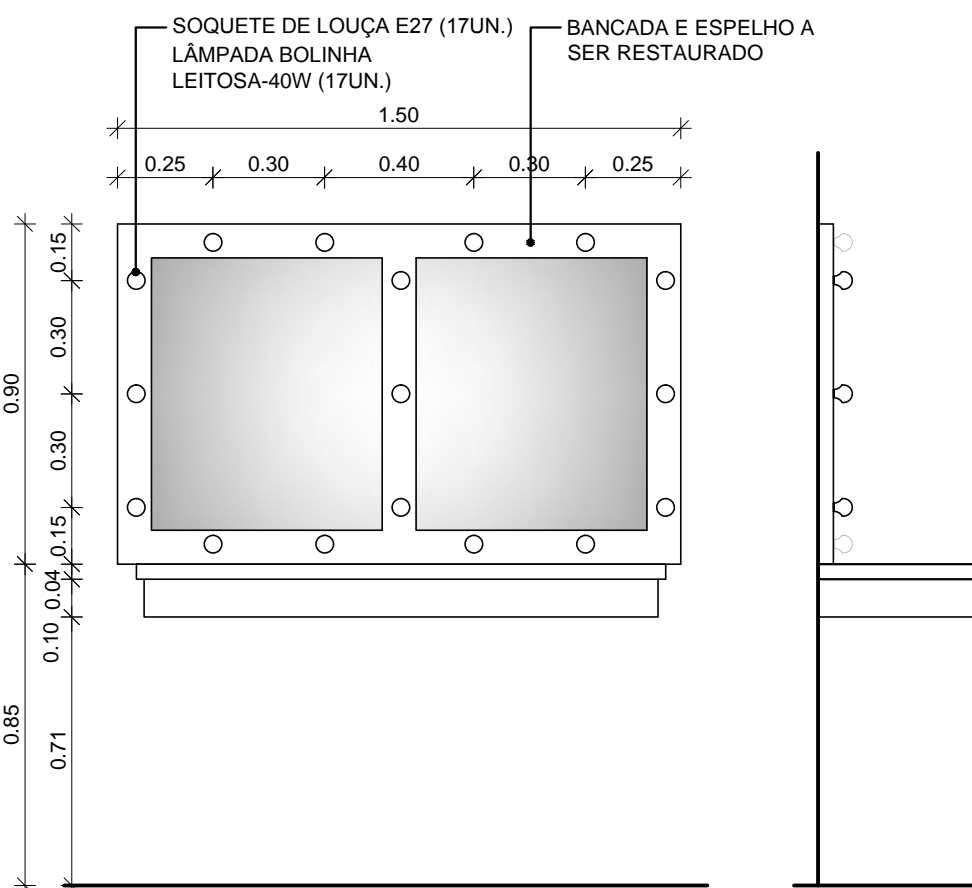
DET. ESPELHO CAMARIM 01 VISTA FRONTAL E LATERAL ESC. 1:50



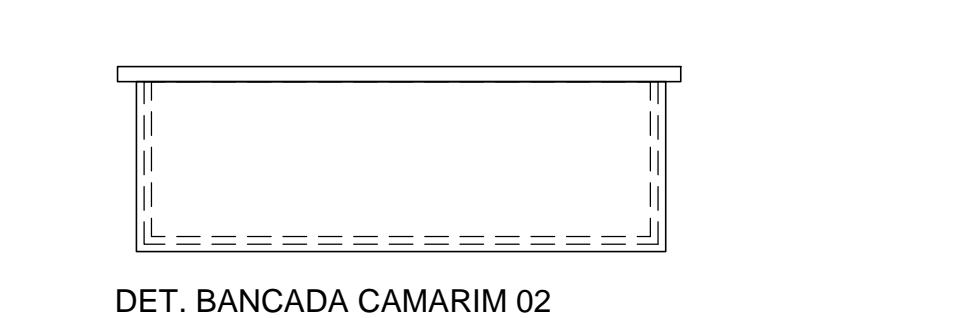
DET. BANCADA CAMARIM 01 PLANTA BAIXA ESC. 1:50



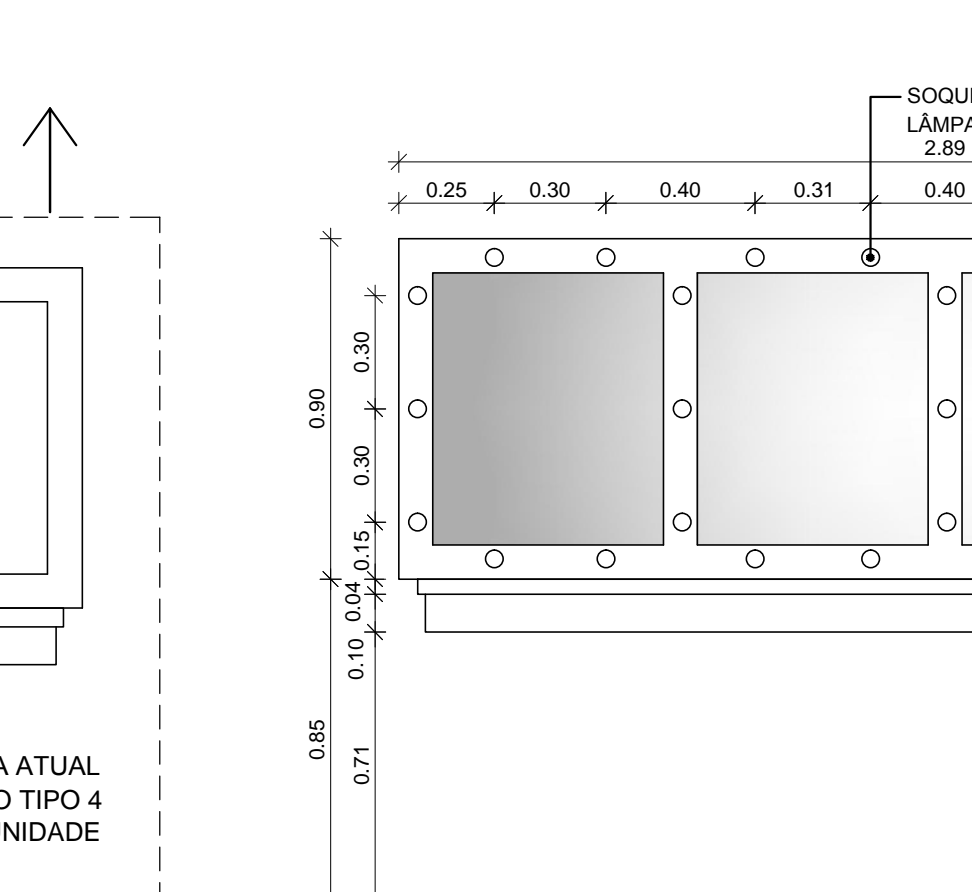
DET. BANCADA CAMARIM 01 PLANTA BAIXA ESC. 1:50



DET. ESPELHO CAMARIM 02 VISTA FRONTAL E LATERAL ESC. 1:50



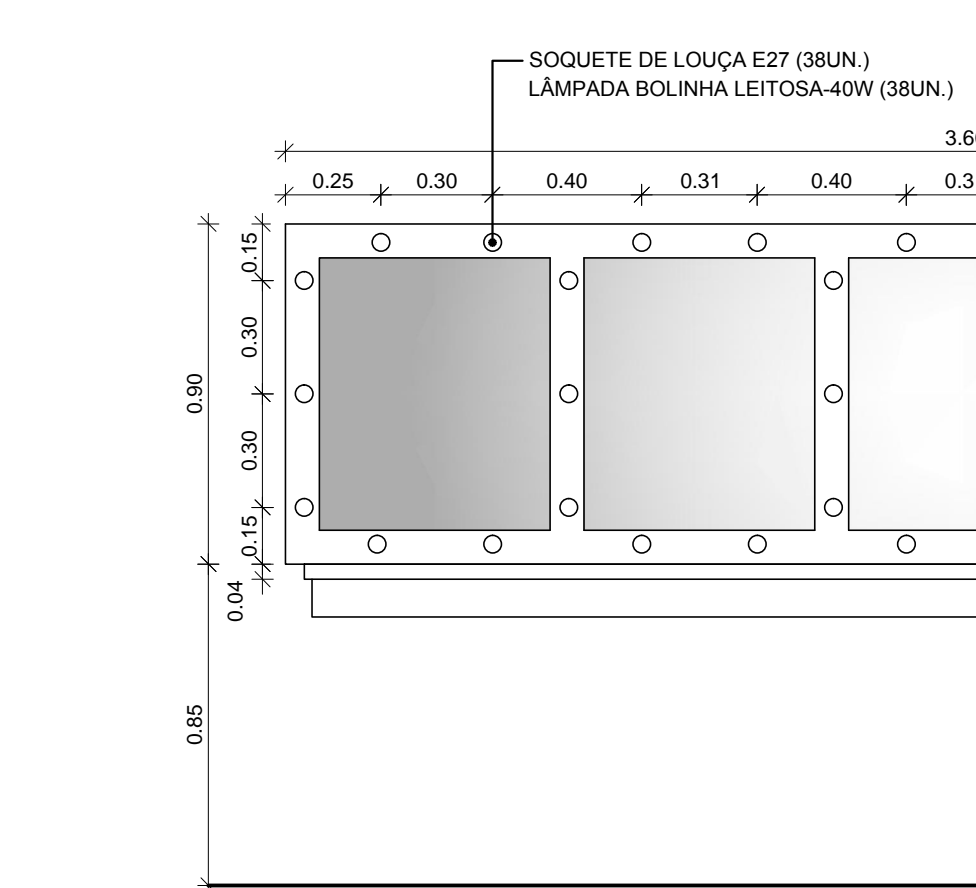
DET. BANCADA CAMARIM 02 PLANTA BAIXA ESC. 1:50



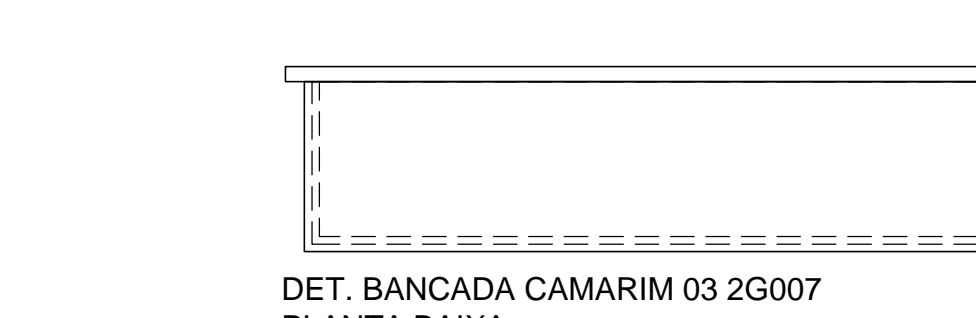
DET. ESPELHO CAMARIM 04 2G009 VISTA FRONTAL ESC. 1:50



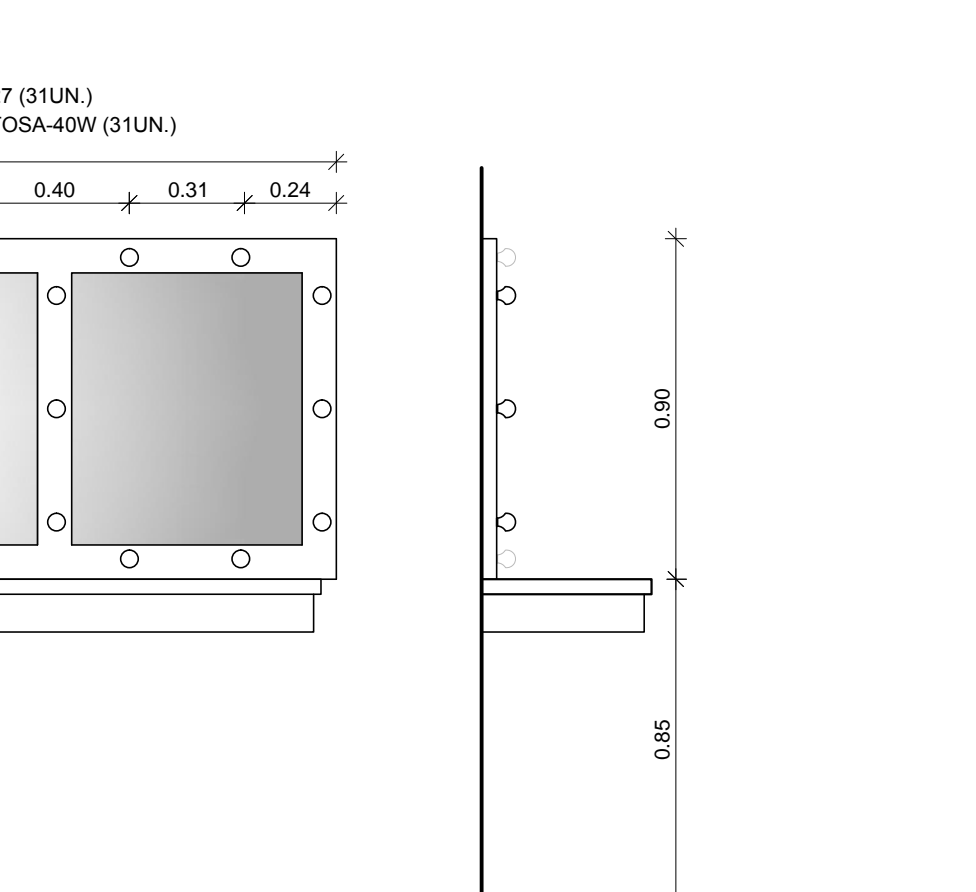
DET. BANCADA CAMARIM 04 2G009 PLANTA BAIXA ESC. 1:50



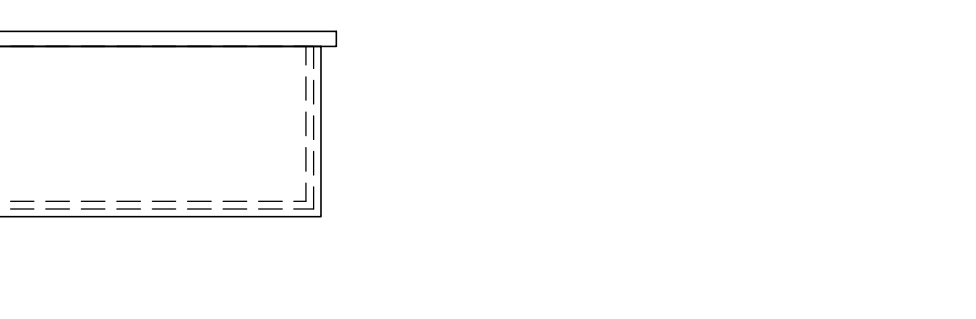
DET. ESPELHO CAMARIM 03 2G007 VISTA FRONTAL ESC. 1:50



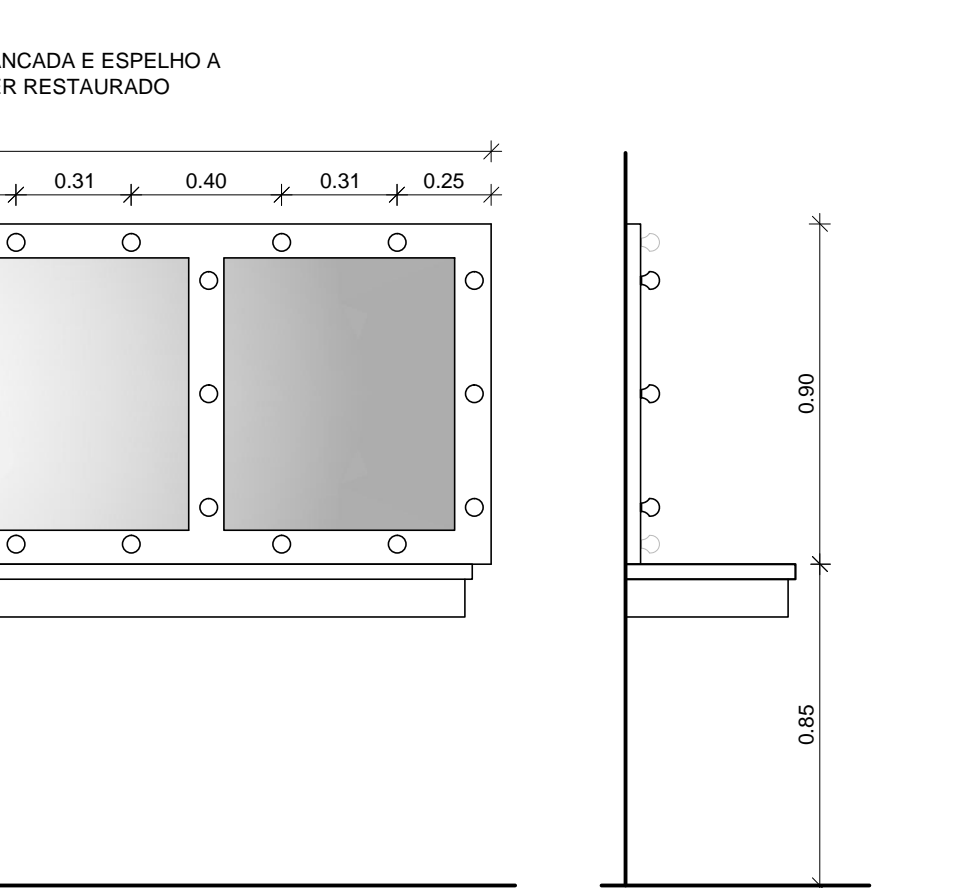
DET. BANCADA CAMARIM 03 2G007 PLANTA BAIXA ESC. 1:50



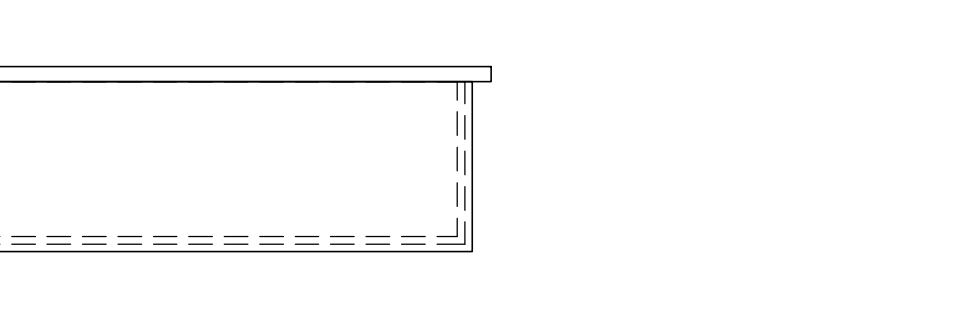
DET. ESPELHO CAMARIM 04 2G009 VISTA FRONTAL ESC. 1:50



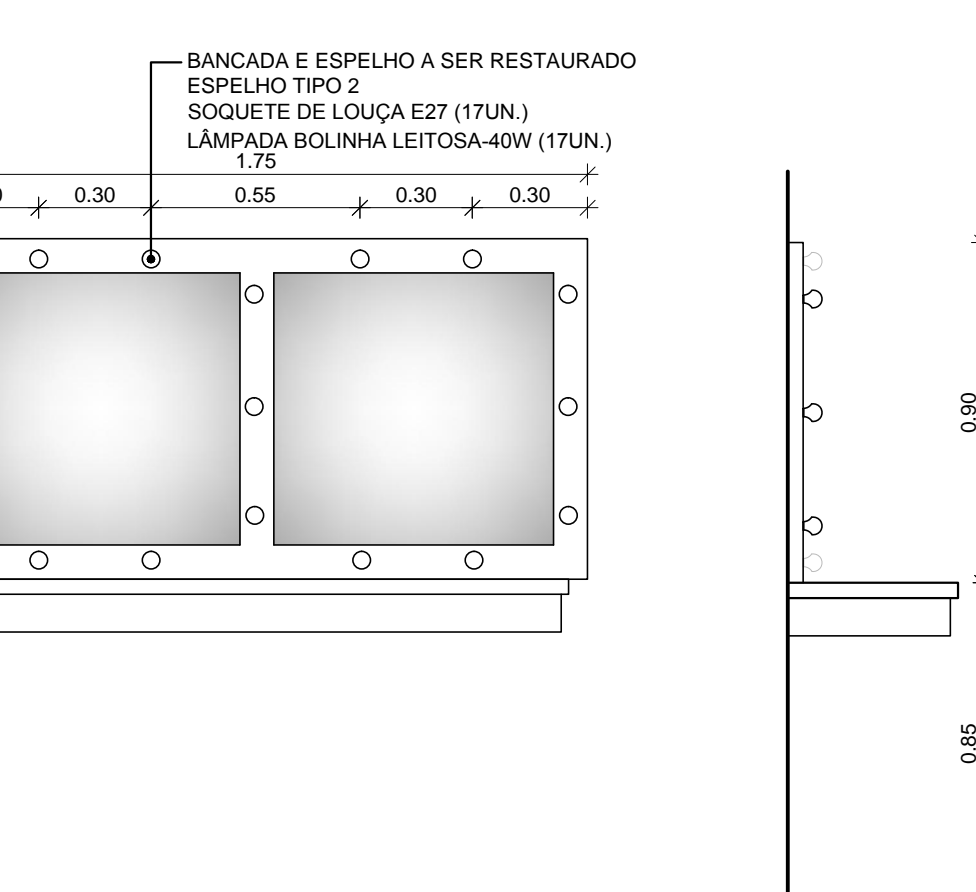
DET. BANCADA CAMARIM 04 2G009 PLANTA BAIXA ESC. 1:50



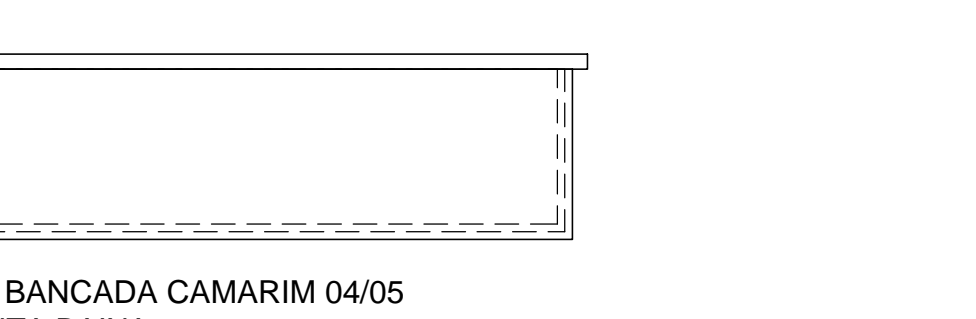
DET. ESPELHO CAMARIM 03 2G007 VISTA FRONTAL ESC. 1:50



DET. BANCADA CAMARIM 03 2G007 PLANTA BAIXA ESC. 1:50

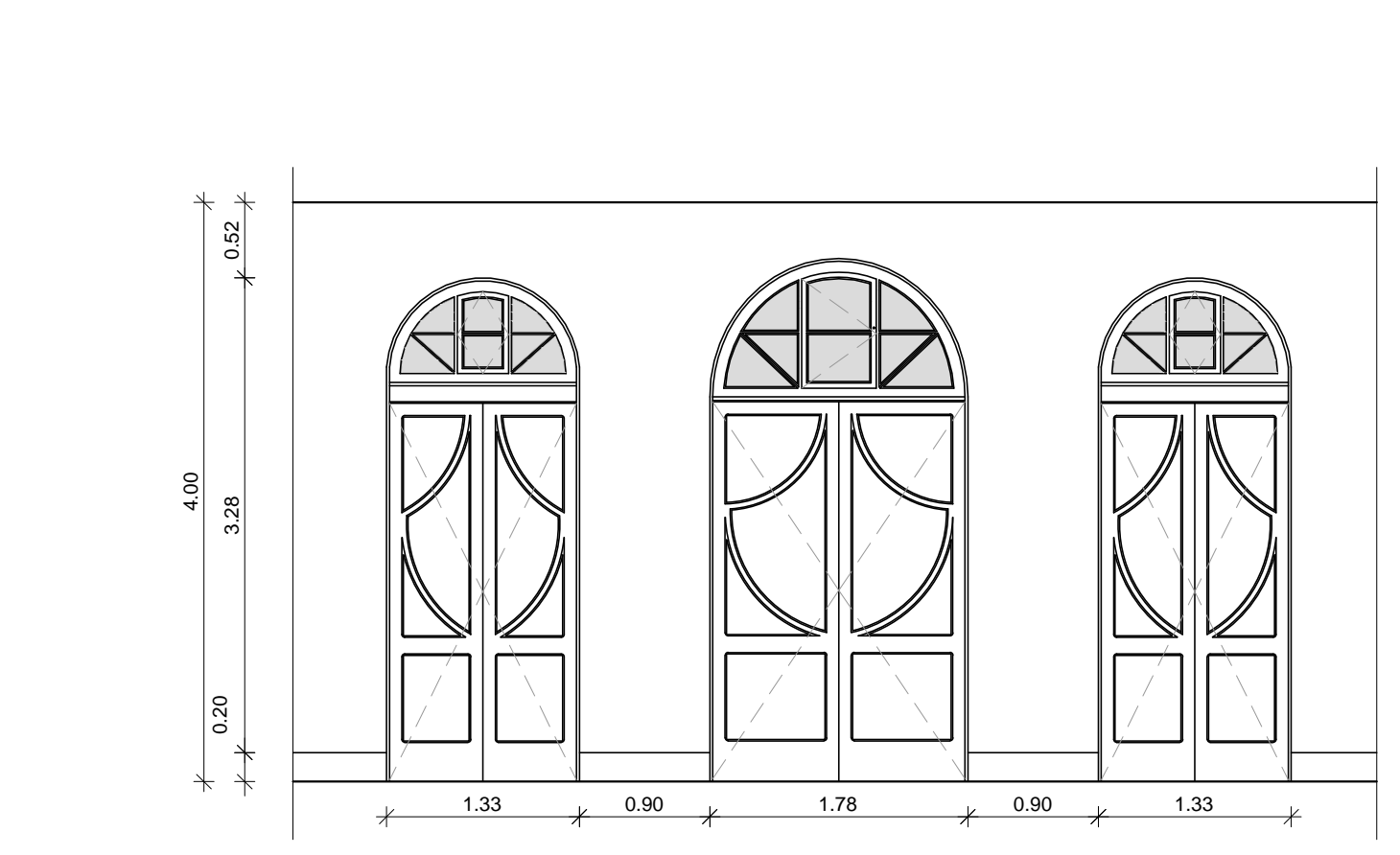


DET. ESPELHO CAMARIM 04 2G009 VISTA FRONTAL ESC. 1:50

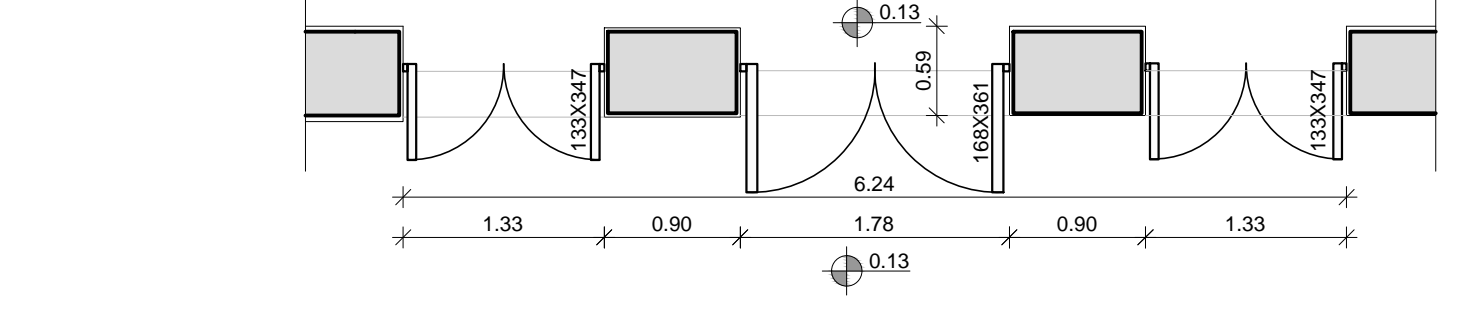


DET. BANCADA CAMARIM 04 2G009 PLANTA BAIXA ESC. 1:50

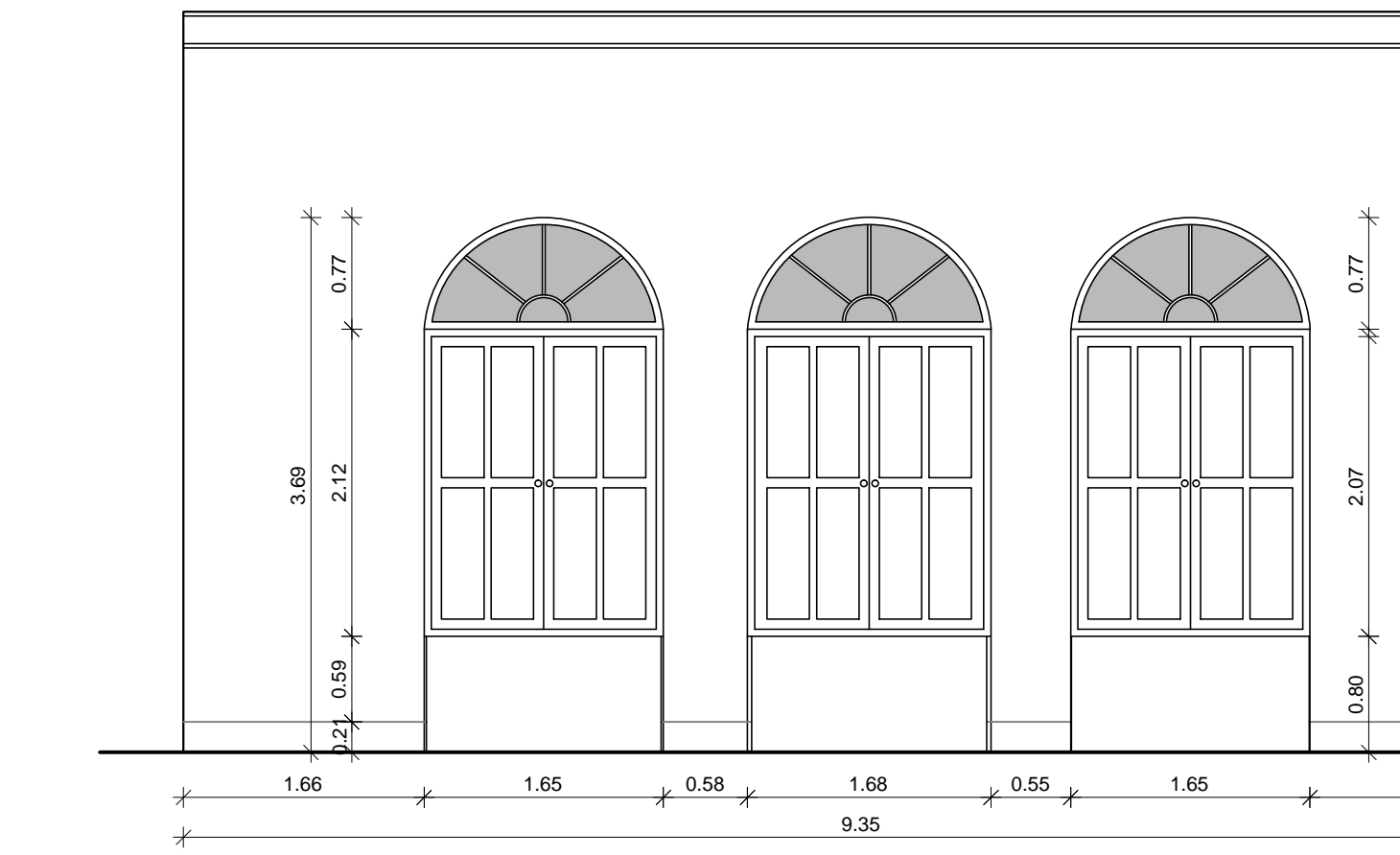
HALL E FOYERS  
CORTINAS



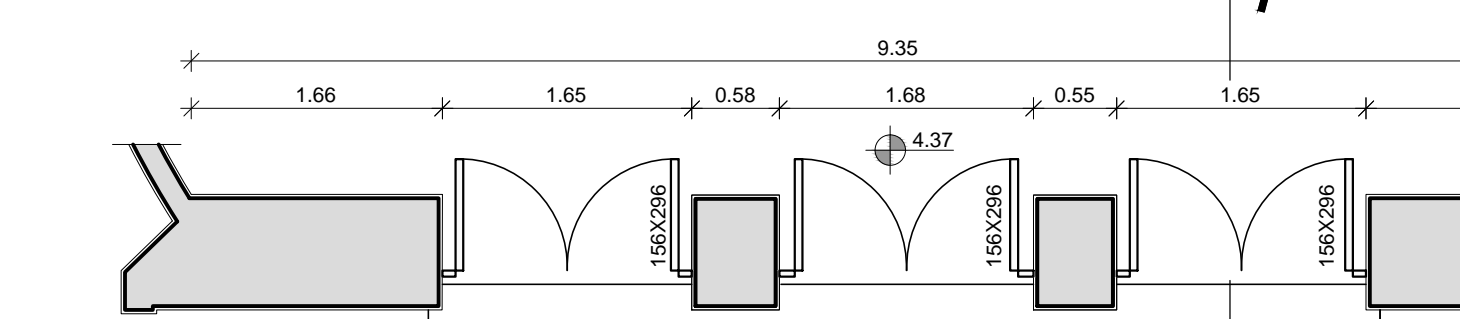
VISTA ESQUADRIAS PLATEIA/HALL ESC. 1:50



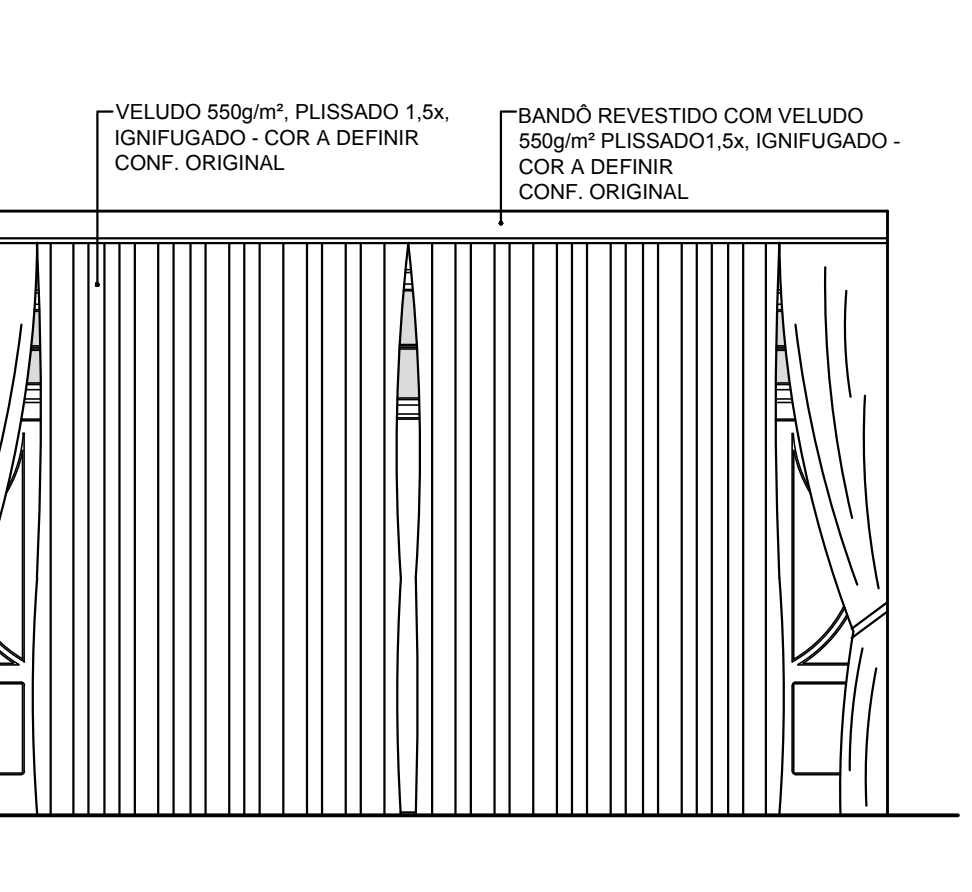
VISTA ESQUADRIAS PLATEIA/HALL ESC. 1:50



VISTA ESQUADRIAS FOYER ESC. 1:50



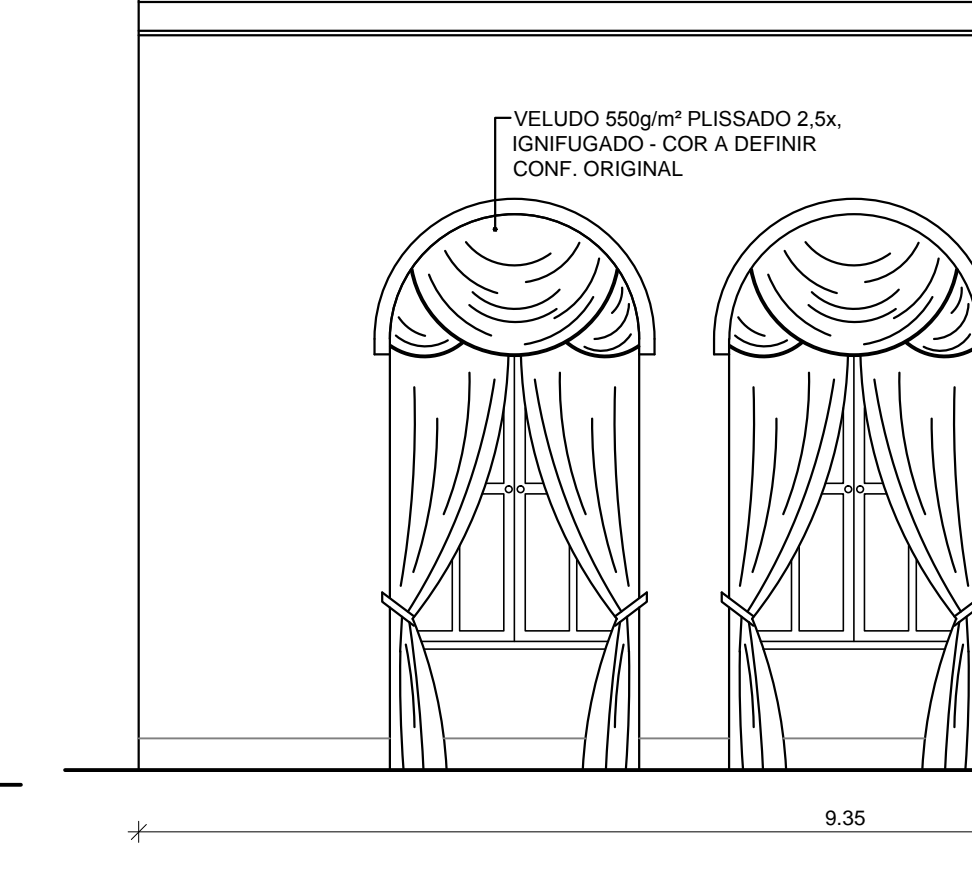
VISTA ESQUADRIAS FOYER ESC. 1:50



VISTA CORTINA VELUDO PLATEIA/HALL (REPRODUÇÃO CONFORME ORIGINAL) ESC. 1:50



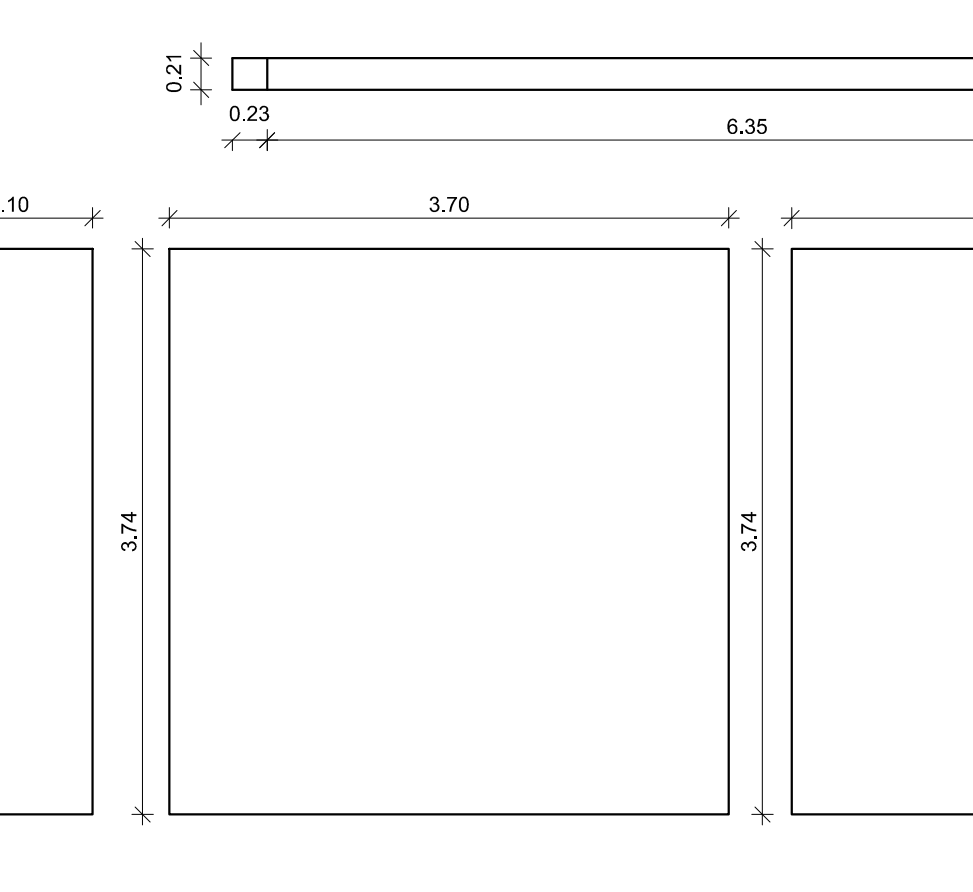
VISTA CORTINA VELUDO PLATEIA/HALL (REPRODUÇÃO CONFORME ORIGINAL) ESC. 1:50



VISTA CORTINA VELUDO FOYER (REPRODUÇÃO CONFORME ORIGINAL) ESC. 1:50



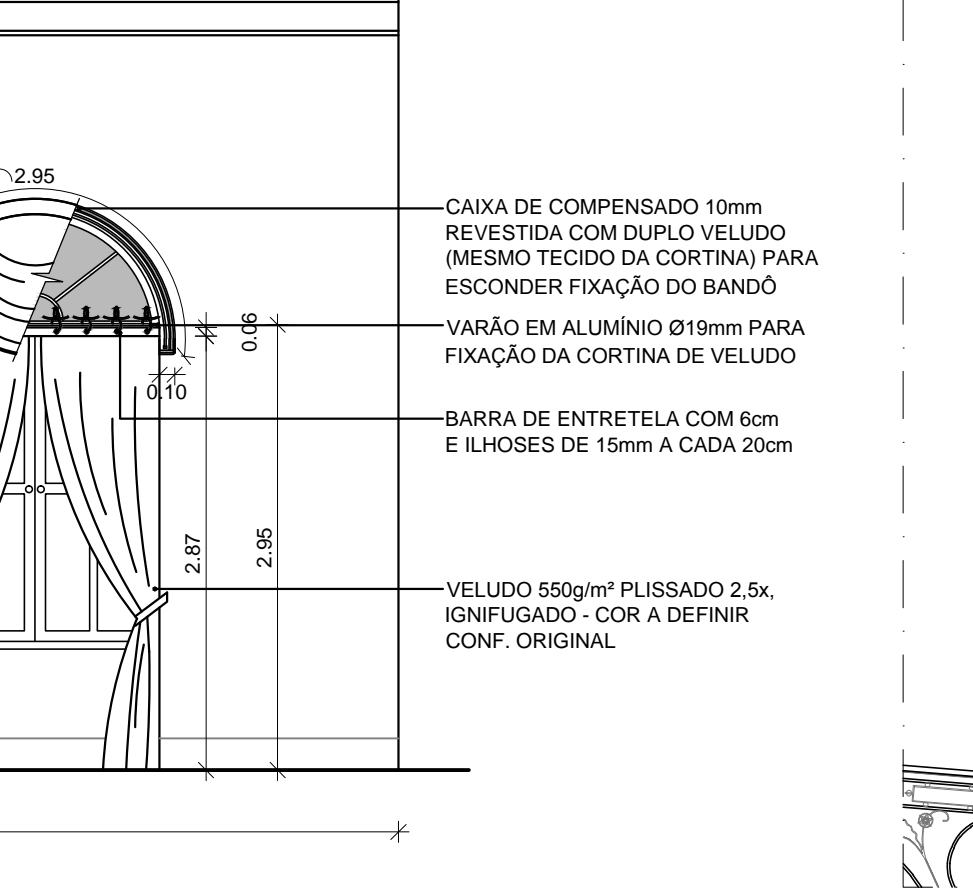
VISTA CORTINA VELUDO FOYER (REPRODUÇÃO CONFORME ORIGINAL) ESC. 1:50



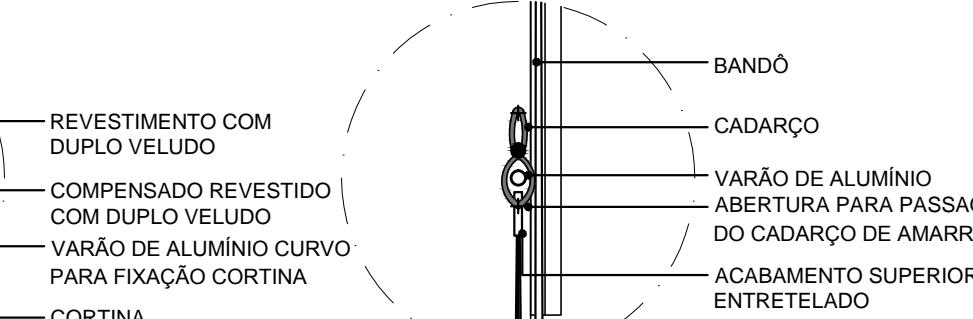
VISTA CORTINA VELUDO PLATEIA/HALL EM VG (REPRODUÇÃO CONFORME ORIGINAL) ESC. 1:50



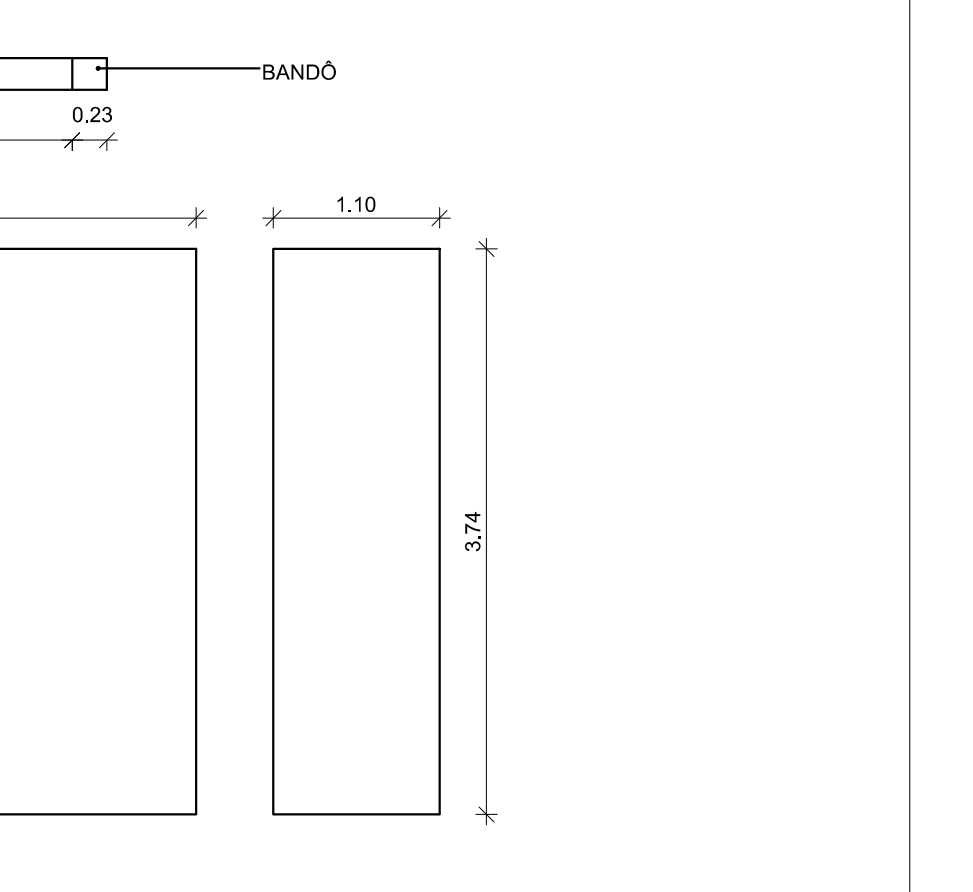
VISTA CORTINA VELUDO PLATEIA/HALL EM VG (REPRODUÇÃO CONFORME ORIGINAL) ESC. 1:50



VISTA CORTINA VELUDO FOYER (REPRODUÇÃO CONFORME ORIGINAL) ESC. 1:50



VISTA CORTINA VELUDO FOYER (REPRODUÇÃO CONFORME ORIGINAL) ESC. 1:50



VISTA CORTINA VELUDO PLATEIA/HALL EM VG (REPRODUÇÃO CONFORME ORIGINAL) ESC. 1:50



VISTA CORTINA VELUDO PLATEIA/HALL EM VG (REPRODUÇÃO CONFORME ORIGINAL) ESC. 1:50



VISTA CORTINA VELUDO FOYER (REPRODUÇÃO CONFORME ORIGINAL) ESC. 1:50



VISTA CORTINA VELUDO FOYER (REPRODUÇÃO CONFORME ORIGINAL) ESC. 1:50

ARQUIVOS REFERENCIAIS			
ARQUIVO	ETAPA	AUTOR	DATA
DATA INTERIOR	PR	SEQUIT	JUL2012
DATA INTERIOR	PR	SEQUIT	JUL2012

01	ATEND. AOS PARCEIROS Nº87/2015-PHANRS E Nº031/2015 DA SMC DA PREF. DE PELOTAS		28/10/2016
02	EMISSÃO INICIAL		03/06/2015
INDICE	DISCIPLINAR	PROJETO	APROV. DATA

Logo da Prefeitura de Pelotas, IPHAN, Ministério da Cultura, Governo Federal e Theatro Sete de Abril.

**CONCLUSÃO DO PROJETO**  
EXECUTIVO DE RESTAURAÇÃO  
THEATRO SETE DE ABRIL E ANEXO ADMIN.  
COORDENADOR DO PROJETO: PREFEITURA MUNICIPAL DE PELOTAS/RS

**ARQUITETURA E RESTAURO - ETAPA PE**  
DET. GUARDA-CORPO E BARRAS SALA DE DANÇA | ESPELHOS CAMARINS | CORTINAS

**ARQUITETURA**